

# LARUE COUNTY 4-H NEWSLETTER

# October 2023

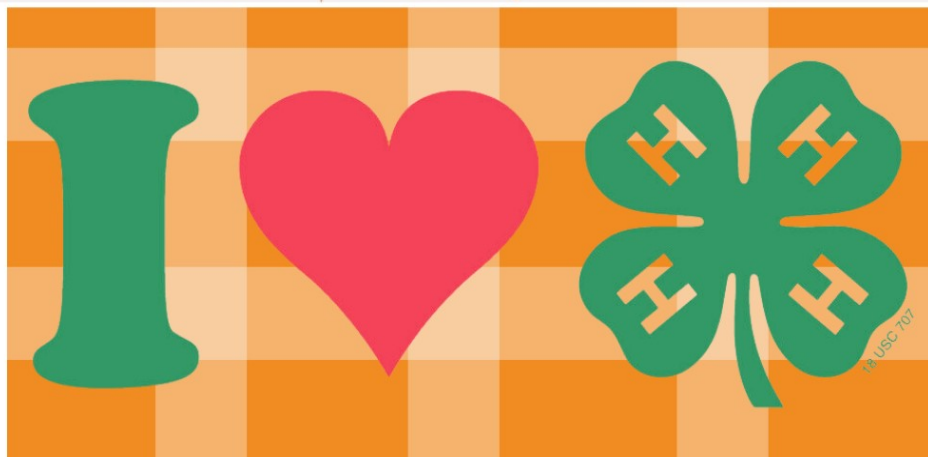


**UK** Martin-Gatton  
College of Agriculture,  
Food and Environment  
Cooperative Extension Service

LaRue County  
PO Box 210, 807 Old Elizabethtown Rd.  
Hodgenville KY 42748-0210  
(270) 358-3401  
Fax: (270) 358-9418  
larue.ca.uky.edu



Save the date for our 4-H Fall Fest happening on 10/24. Come find out what all 4-H has to offer, get some food, and win some prizes!



Sincerely,

*Misty Wilmoth*

Misty Wilmoth  
LaRue County Extension Agent  
For 4-H Youth Development  
mwilmoth@uky.edu

## Cooperative Extension Service

Agriculture and Natural Resources  
Family and Consumer Sciences  
4-H Youth Development  
Community and Economic Development

## MARTIN-GATTON COLLEGE OF AGRICULTURE, FOOD AND ENVIRONMENT

Educational programs of Kentucky Cooperative Extension serve all people regardless of economic or social status and will not discriminate on the basis of race, color, ethnic origin, national origin, creed, religion, political belief, sex, sexual orientation, gender identity, gender expression, pregnancy, marital status, genetic information, age, veteran status, physical or mental disability or reprisal or retaliation for prior civil rights activity. Reasonable accommodation of disability may be available with prior notice. Program information may be made available in languages other than English. University of Kentucky, Kentucky State University, U.S. Department of Agriculture, and Kentucky Counties, Cooperating. Lexington, KY 40506



Disabilities accommodated with prior notification.

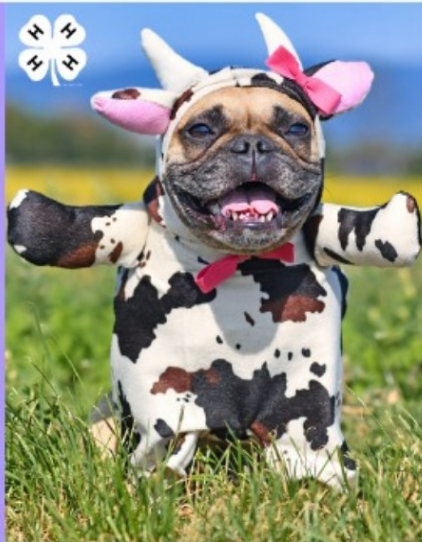


# 4-H DOG CLUB COSTUME CONTEST

WHEN? TUESDAY, OCTOBER 24TH AT THE 4-H  
FALL FESTIVAL

- DOGS MUST BE ON LEASHES -

ENTRIES WILL BE ACCEPTED STARTING  
AT 6:30PM & JUDGING WILL TAKE PLACE  
@ 7:00PM



# Fall

## PHOTO CONTEST

\*Open to Cloverbuds thru adults

**Due October 23rd**

SUBMIT YOUR BEST PHOTO  
REPRESENTING FALL IN PERSON TO THE  
EXTENSION OFFICE BY NOON ON  
10/23/23 OR EMAIL DIGITAL PHOTOS  
TO MWILMOTH@UKY.EDU.



# 4-H Country Ham AUCTION



**DURING LINCOLN DAYS**

Saturday, October 7th

**11:00 a.m.**

Second Stage  
(near vibe)

Opening bids will start at \$35.  
A limited number of hams to be sold.







# 4-H Issues Conference

November  
16 - 18, 2023  
@ Feltner 4-H Camp

**\*TRANSPORTATION WILL NOT BE PROVIDED DUE TO A CONFLICTING 4-H EVENT\***

This 3-day conference for high school students gives youth the opportunity to connect with other young leaders from across Kentucky. Participants will discuss issues that are important to youth while learning how to impact their community.

# COST

\$200

**For more information, contact:**

**Misty Wilmoth,  
4-H Youth Development  
Agent for LaRue County**

**270-358-3401**





# UPCOMING DEADLINES:

**Record Books  
Due:  
October 13th!**



**State Achievement  
Applications  
Due:  
November 1st!**

---

## Club Meeting Dates:

- 10/3 - Wranglers Club @ 6:00pm at the Extension Office
- 10/5 - Shooting Sports @ 6:30pm at The New Haven Gun Club
- 10/10 - Gardening Club @ 5:00pm at the Extension Office
- 10/16 - Livestock Club @ 6:00pm at the Extension Office
- 10/17 - Dog Club @ 6:00pm at the Extension Office
- 10/18 - Canoe & Kayak Club @ 6:30pm at the Extension Office
- 10/19 - Middle School Club @ the end of school until 4 at the LCMS Library
- 10/19 - Shooting Sports @ 6:30pm at the New Haven Gun Club
- 10/20 - Teen Club @ 2:00 at the HS Greenhouse Classroom
-  10/26 - Cloverbuds at 5:00pm at the Extension Office 



**Warm Blessings**  
Community Kitchen

**If your club would like to volunteer at warm blessings, please contact Misty Wilmoth. We are scheduled to volunteer on the 3rd Monday of every month!**





# TEEN CLUB



The 4-H Teen Club had an ice cream social for the first meeting of the program year!



The October meeting will be held on 10/22 from 2-3pm at the LCHS Greenhouse Classroom



# 4-H Achievement Trip 2023







→ Livestock Club  
elected officers



4-H is for YOU!  
4-H is for FUN!  
v2.4honline.com

## HORSE CLUB AWARD CEREMONY



Gardening Club made Nature Faces →



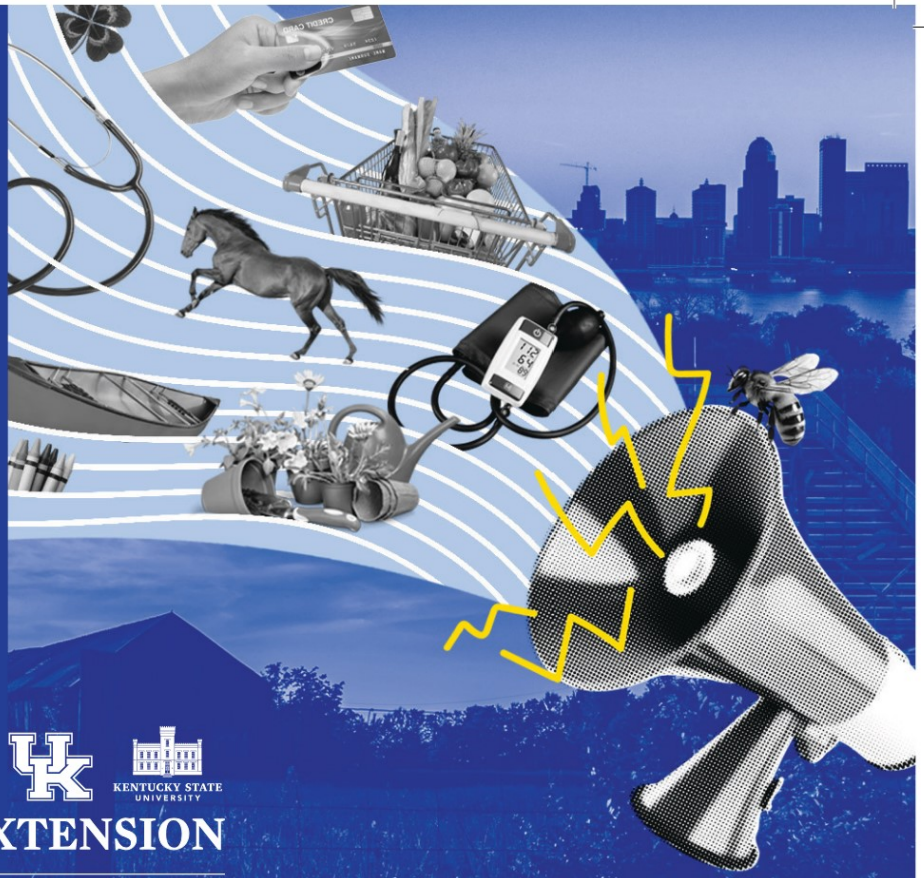


## HOW CAN WE SERVE YOU?

Take our ten-minute survey to help us develop programs addressing needs in your community.



**KENTUCKY**  
COOPERATIVE EXTENSION



# Beginners Cross Stitch Class

Open to 4-Hers ages 9-18

November 2nd, 2023  
5:00pm - 6:00pm

At the LaRue County  
Extension Service

REGISTER NOW



270-358-3401



# NOVEMBER 1ST, 2023

## APPLICATION DEADLINE FOR STATE ACHIEVEMENT

### IMPORTANT REMINDERS:

- SAVE YOUR APPLICATION FROM YEAR TO YEAR TO LOOK BACK AND BUILD ON.
- EXPLAIN EACH ENTRY IN ALL CATEGORIES IN A CLEAR, CONCISE MANNER.
- DO NOT COUNT AN EVENT MORE THAN ONCE ON THE APPLICATION
- REVIEW YOUR APPLICATION FOR MISTAKES
- ADJUST YOUR PRINTER SETTINGS TO MAKE SURE NO ITEMS ARE LEFT OFF.
- INSERT ADDITIONAL LINES AS NEEDED. THERE IS NOT A PAGE LIMIT.

Level	Requirements for that Level
Clover Level 1	<ul style="list-style-type: none"><li>• Be 10 years old by January 1, 2024</li><li>• Have a minimum of 25 points</li></ul>
Clover Level 2	<ul style="list-style-type: none"><li>• Be 11 years old by January 1, 2024.</li><li>• Have a minimum of 50 points.</li></ul>
Clover Level 3	<ul style="list-style-type: none"><li>• Be 12 years old by January 1, 2024.</li><li>• Have a minimum of 75 points.</li></ul>
Bronze	<ul style="list-style-type: none"><li>• Be 13 years old by January 1, 2024.</li><li>• Have a minimum of 100 points.</li><li>• Have completed Bronze Profile Page.</li></ul>
Silver	<ul style="list-style-type: none"><li>• Be 14 years old by January 1, 2024.</li><li>• Have a minimum of 150 points.</li><li>• Have completed Silver Profile Page.</li></ul>
Gold	<ul style="list-style-type: none"><li>• Be 15 years old by January 1, 2024.</li><li>• Have a minimum of 25 points.</li><li>• Have completed Gold Profile Page.</li></ul> <p>Interviews for Gold will take place on March 4, 2024</p>
Emerald	<ul style="list-style-type: none"><li>• Have previously achieved Gold Achievement Level.</li><li>• Be 16 years old by January 1, 2024.</li><li>• Have an updated application.</li><li>• Have a 3-5 minute video.</li><li>• Have two letters of recommendation.</li><li>• Have a cover letter and resume (these must be brought to the interview).</li></ul>



**NEW**

# LARUE COUNTY 4-H MIDDLE SCHOOL CLUB

**FOR LCMS  
6TH - 8TH  
GRADERS**

**The LaRue County 4-H Middle School Club is our newest club! If you are interested in joining, come to the first meeting on 10/19 in the LCMS Library. The meeting will start at the end of the school day and will go until 4:00pm! Meetings will be held monthly. For more information, please contact 4-H Agent, Misty Wilmoth @ 270-358-3401 or [mwilmoth@uky.edu](mailto:mwilmoth@uky.edu)**

